



ISSUE

Issued for Permit
08.05.2016

PROJECT: 16-018

Hampton Inn & Suites

New Stanton, PA 15672

OWNER

Stanton Hospitality LLC

52 Blueberry Lane,
Grove City, PA 16127

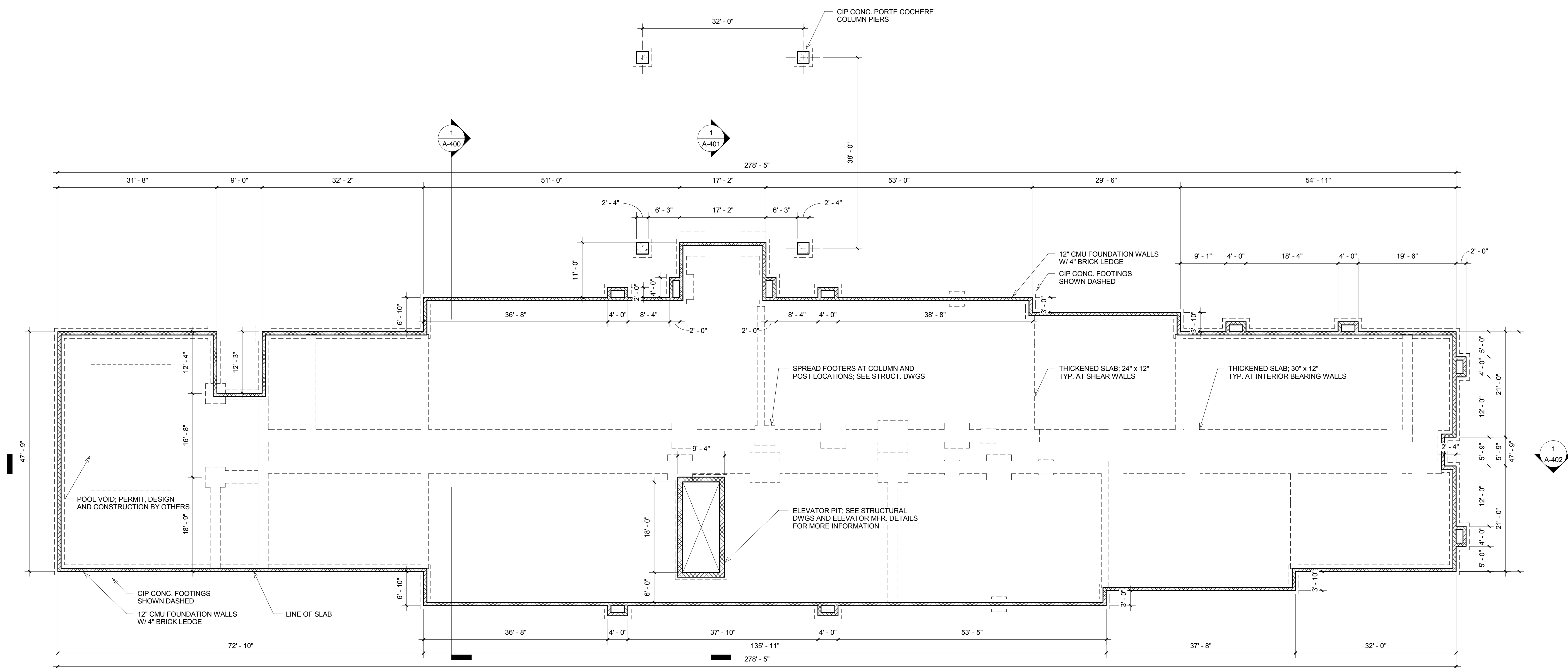
THESE DRAWINGS ARE FOR REVIEW OF DESIGN AND SCOPE DESCRIPTION ONLY. NO REPRESENTATION IS MADE TO THE ACCURACY OF THE DRAWINGS WITH RESPECT TO EXISTING DIMENSIONS OR CONDITIONS. ALL CONSULTANTS AND CONTRACTORS MUST VERIFY ANY AND ALL DIMENSIONS AND CONDITIONS WHICH ARE CRITICAL TO THEIR WORK. THESE DRAWINGS ARE INSTRUMENTS OF SERVICE AND ARE THE INTELLECTUAL PROPERTY OF JMAC ARCHITECTS. ANY UNAUTHORIZED USE OR REPRODUCTION IS PROHIBITED.

[illegible]

Foundation Plan

As indicated

A-100



1 Foundation Plan

$$\frac{3}{32}'' = 1'-0''$$

* SEE STRUCT. DWGS FOR MORE INFORMATION

GENERAL NOTES

1. DO NOT SCALE DRAWINGS. SEE SPECIFICATIONS FOR ADDITIONAL INFORMATION.

2. NOTIFY THE ARCHITECT OF ANY DISCREPANCIES FOUND IN THE DRAWINGS AND/ OR SPECIFICATIONS.

3. ALL DIMENSIONS SHOWN ARE FROM

- A. FACE OF STUD
- B. FACE OF EXTERIOR SHEATHING
- C. FACE OF BLOCK
- D. FACE OF INSULATED CONCRETE FORM UNIT
- E. CENTERLINE OF BEAM
- F. CENTERLINE OF DOORS AND WINDOW - ROUGH OPENING

4. HOLD ALL CRITICAL AND CLEAR DIMENSIONS. NOTIFY ARCHITECT IF ANY DIMENSIONS CANNOT BE MET.

5. WORK PERFORMED IN CONNECTION WITH THESE DRAWINGS AND SPECIFICATIONS SHALL BE IN STRICT COMPLIANCE WITH PERTINENT CODES, RULES, ORDINANCES, AND REGULATIONS OF THE LOCAL, STATE, AND FEDERAL GOVERNING AUTHORITIES AND BE COMPLIANT WITH APPLICABLE ACCESSIBILITY CODES.

6. BUILDING OWNER AND/OR GENERAL CONTRACTOR SHALL OBTAIN AND BEAR THE COSTS OF ALL PERMITS, SEALED DRAWINGS, APPROVALS, AND INSPECTIONS AS REQUIRED TO BUILD FACILITIES ACCORDING TO FINAL PLANS AND SPECIFICATIONS

7. SEE STRUCTURAL DRAWINGS FOR ALL STRUCTURAL INFORMATION